

Annexure – 1 (Specification)

LOW DENSITY POLY ETHELENE (LDPE) PACKING COVERS

Specifications/ Descriptions of packing covers– Packing covers shall be extruded from virgin film grade raw material named poly ethylene. The covers shall be tubular with one end welded 3mm above the seams. The opposite end shall be left as open mouth. It shall be in natural shade.

The average requirement for all categories of items would be approximately 40 tons per annum which is only an indicative quantity and the actual requirement may vary from the indicative quantity.

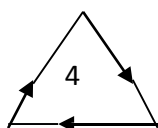
The details of the size and thickness are furnished below:-

I. LDPE Virgin Food Grade Packing Covers:

Sl.No	Item Size	Packing Item Unit & Weight	Guage
1.	6"x8.5"	500 Gm	60 Microns
2	7" X 10"	1KG	
3.	8" X 10"	1KG(ATTA)	
4.	10" X 12"	2 Kg.	
5.	12"X16"	5KG	100 Microns

Printing on the covers :- Packing covers shall be printed on one side in one color (**Green**) as per the design supplied by the Federation.(**Single color Gravure printing**) The following symbols defined by the Society of the Plastic industry (SPI) USA should be marked in each cover. The following information shall also be printed in English and Malayalam.

R.O No. Recycle / Reprocess.



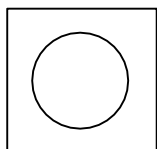
L.D.P.E

“The product is made by poly ethylene virgin film graded material and is reusable / recyclable”.

A logo have to be printed in the packing covers by a symbol and colour code as stipulated as per Rule 32 of PFA Act 1954, for the purpose to indicate that the product is for **Vegetarian Food**. The symbol shall consist of a green colour filled circle having a diameter not less than the minimum size specified in the table below, inside the square with similarly coloured (green) outline having side double the length of the diameter of the circle.

Table

Sl.No.	Area of principal display panel	Minimum size of diameter in mm
1.	Up to 100 cm square	3
2.	Above 100 cm square up to 500 cm square	4
3.	Above 500 cm square up to 2500 cm square	6
4.	Above 2500 cm square	8



All orders of Government/Local Bodies/Court in this regard issued from time to time should be strictly adhered to and the tenderer alone will be liable for any defects or violation.

The supplier must print supplier code provided by the corporation in all their covers.

2. POLY PROPYLENE(PP) PACKING COVERS

Specifications/ Descriptions of packing covers– Packing covers shall be extruded from virgin film grade raw material named poly propylene. The covers shall be tubular with one end wire welded 3mm above the seams. The opposite end shall be left as open mouth. It shall be in natural shade.

The average requirement for all categories of items would be approximately 20 Tons per annum which is only an indicative quantity and the actual requirement may vary from the indicative quantity.

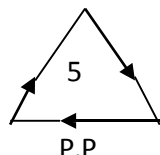
The details of the size and thickness are furnished below:-

2. PP Virgin Food Grade Packing Covers:

S.No	Item Size	Packing Item Unit & Weight	Guage
1.	4" X 6"	100 GRAMS	51 Microns
2.	5" X 8"	250 GRAMS	
3.	6" X 8.5"	500 GRAMS	
4.	10"X16"	500 GRAMS(CHILLY)	51 Microns
5.	7"x10"	1KG	51 Microns
6.	12"X16"	1 KG(CHILLY)	51 Microns

Printing on the covers :- Packing covers shall be printed on one side in one color (**Green**) as per the design supplied by the Federation.(**Single color Gravure printing**) The following symbols defined by the Society of the Plastic industry (SPI) USA should be marked in each cover. The following information shall also be printed in English and Malayalam.

R.O No. Recycle / Reprocess.

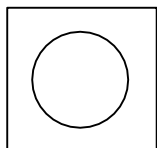


“The product is made by poly ethylene virgin film graded material and is reusable / recyclable”.

A logo have to be printed in the packing covers by a symbol and colour code as stipulated as per Rule 32 of PFA Act 1954, for the purpose to indicate that the product is for **Vegetarian Food**. The symbol shall consist of a green colour filled circle having a diameter not less than the minimum size specified in the table below, inside the square with similarly coloured (green) outline having side double the length of the diameter of the circle.

Table

Sl.No.	Area of principal display panel	Minimum size of diameter in mm
1.	Up to 100 cm square	3
2.	Above 100 cm square up to 500 cm square	4
3.	Above 500 cm square up to 2500 cm square	6
4.	Above 2500 cm square	8



All orders of Government/Local Bodies/Court in this regard issued from time to time should be strictly adhered to and the tenderer alone will be liable for any defects or violation.

The supplier must print supplier code provided by the corporation in all their covers.

3.Subsidy Cover (HDPE Semi Virgin –Kettu Cover)

Specifications/ Descriptions of packing covers– Packing covers shall be extruded from semi virgin film grade raw material named poly HMHDPE. The covers shall be tubular with one end wire welded 3mm above the seams. The opposite end shall be left as open mouth. It shall be in natural shade.

The average requirement for all categories of items would be approximately 10 Tons per annum which is only an indicative quantity and the actual requirement may vary from the indicative quantity.

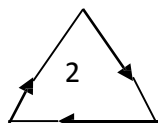
The details of the size and thickness are furnished below:-

3.Subsidy Cover (HDPE Semi Virgin –Kettu Cover) For Subsidy seasons

S.No	Item Size	Packing Item Unit & Weight	Guage
1.	6" X 10"	½ Kg.	51 Microns
2.	9" X15"	1 Kg.	
3.	10" X17"	2 Kgs.	
4	14" x 19"	5 Kgs.	

Printing on the covers :- Packing covers shall be printed on one side in one color (**Green**) as per the design supplied by the Federation.(**Single Color Gravure printing**) The following symbols defined by the Society of the Plastic industry (SPI) USA should be marked in each cover. The following information shall also be printed in English and Malayalam.

R.O No. Recycle / Reprocess.

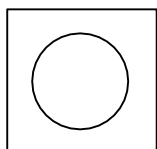


H.D.P.E

“The product is made by poly ethylene virgin film graded material and is reusable / recyclable”. A logo have to be printed in the packing covers by a symbol and colour code as stipulated as per Rule 32 of PFA Act 1954, for the purpose to indicate that the product is for **Vegetarian Food**. The symbol shall consist of a green colour filled circle having a diameter not less than the minimum size specified in the table below, inside the square with similarly coloured (green) outline having side double the length of the diameter of the circle.

Table

Sl.No.	Area of principal display panel	Minimum size of diameter in mm
1.	Up to 100 cm square	3
2.	Above 100 cm square up to 500 cm square	4
3.	Above 500 cm square up to 2500 cm square	6
4.	Above 2500 cm square	8



All orders of Government/Local Bodies/Court in this regard issued from time to time should be strictly adhered to and the tenderer alone will be liable for any defects or violation.

The supplier must print supplier code provided by the corporation in all their covers.

SCHEDULE 1

(a) Earnest Money Deposit:-

Earnest Money Deposit of Rs.50,000/- (Rupees Fifty Thousand only) separately for each item in the form of Demand Draft payable at Ernakulam in favour of the Kerala State Co- Operative Consumer's Federation Ltd.KOCHI-20. The suppliers can also remit the EMD through ELECTRONIC TRANSFER to the bank account **(A/C NO: 140866003000064 KERALA STATE CO OPERATIVE BANK (KERALA BANK) ERNAKULAM MAIN BRANCH IFSC CODE: KSBK0001408)**. However copy of cash challan clearly mentioning the same of the depositor should be forwarded to Consumerfed so as to reach the office before the time fixed for tender opening.

(b) Security Deposit:

In the case of successful tenderer, the EMD OF RS.50,000/- shall be converted as Security Deposit. Balance security deposit of Rs.50,000/- should be submitted by the tenderer within 7 days after receiving the contract confirmation letter by way of DD or by electronic means NEFT, RTGS Etc. in favour of Kerala State Co-Operative Consumer's Federation Ltd. No interest shall payable on security deposit. Security deposit will be refundable after satisfactory performance of the contract. Security deposit will be forfeited in the event of breach of all or any of the terms of the tender or non performance of the contract.

GENERAL CONDITIONS

1. Consumerfed is inviting E-tenders for supply the Packing Cover,Subsidy Grocery Cover for our various units across Kerala.(ITEMS & SPECIFICATION AS PER ANNEXURE-1)
2. Aspiring bidders/suppliers who have not obtained the user ID & Password for participating in e-tendering in Consumerfed may now obtain the same by giving the details in the website www.tenderwizard.com/CFED through link "Register". *The bidders/suppliers are able to quote the rates only after their registration is enabled.*
3. Bidders/Suppliers can access e-tender form up to 10.02.2024 2.00 pm
4. Last date for the submission of completed tender document in the e-tender website is 10.02.2024 2.00PM. E-Tenders quoted rates will be opened on 10.02.2024 3.00PM. All mandatory fields / spaces in the tender document or schedules should be filled up.
5. Bidders/Suppliers can access tender documents on the website, fill them and submit the completed tender document into electronic tender box on the website itself. Bidders/suppliers should upload only the downloaded documents, without changing the name of the document. Making any modifications in the downloaded documents, except filling the required details, may lead to disqualification of the supplier from the tender. The EMD details shall be filled and EMD Payable as DD or by electronic modes eg:NEFT OR RTGS should be submitted on or before 10.02.2024 2.00PM.(See SCHEDULE-1 A&B).
6. After loading and submitting the quote sheet, the bidder / supplier should delete the quote sheets from the computer used by them (in case of computers of internet café or if such common shared computers are used) and clear the Recycle bin, to avoid others to see the rates quoted by them.
7. The tenders will be opened at the Head Office of KSCCF Limited at 10.02.2024 3.00PM. Tenderers or their authorized representative may attend the tender opening.
8. Any document submitted through post / courier / by hand is at the risk of bidders / suppliers (i.e., KSCCF LTD. is not responsible for any delay / loss
9. Corrigendum will be published in the website for all modifications / corrections, if any.
10. If any tenderer wants any clarification, help or technical assistance, they can contact Purchase Manager Ph:8281898306/9496020840 Head Office of the Consumerfed or by e-mail/fax/letter. A user's manual can also be sent on request to any registered tenderer for additional help for participating in the e-tender.
11. Tenderers should be prepared to accept orders subject to the penalty clauses for forfeiture of security in the event of default suppliers.
12. All payments to the supplier will be made by account payee/cheque/RTGS. In case payment is required by demand draft ,bank charges will have to be borne by the supplier.
13. **Goods have to be delivered at the Consumerfed godowns at different locationsin Kerala.**
14. Delivery should be made within 15 days from the date of Purchase order.
15. Default in supplies either wholly or partly on account of quality or quantity will result in proportionate forfeiture of security deposit and EMD.

16. The item specifications specified in the **Annexure 1** has to be strictly followed otherwise the said quantity will be liable for rejection by the Federation and the cost and damages for the same will be recovered from the concerned tenderer who carried out the supply.
17. Payments will be made only after the supplies are actually verified and taken into stock. Payment of the goods will be made to the supplier by the purchaser within 45 days from the date of the receipt of goods.
18. The tenderer is at liberty to quote rate for whole or part of the items required by the Federation.
19. The period of contract will be for a period of one year from the date of award. Consumerfed reserves the right to extend the period of contract on the existing terms and conditions for a further period of two months or next tender award.
20. **Eligibility of Tenderer:**
 - a) Tenderer should be a manufacturer and should submit MSME CERTIFICATE
 - b) Should obtain valid Pollution Registration.
 - c) Should possess Minimum Experience of 3 years & above.
 - d) Tenderers should submit Experience Certificate or valid Supply details.
 - e) Tenderers should submit Three years Sales details duly authorized by Auditor.
 - f) All eligibility certificates should be Notorized and should submit the same before tender opening at Consumerfed Head Office Ernakulam.
 - g) Samples(non printed) should be submitted before tender opening.
21. Purchase Committee will be held on 13.02.2024 02.30 PM. The Purchase committee holds the right to decide L1 supplier after evaluating the quoted price, samples, and the documents provided by the supplier.
22. The successful tenderer has to execute an agreement in stamp paper worth Rs.500/- for the due fulfillment of the contract.
23. Special conditions if any of the tenderer attached with the tender will not be applicable to the contract unless they are expressly accepted in writing by the undersigned.
24. The undersigned reserves the right to reject any or all the tenders without assigning any reasons thereof.
25. In case of any difference or dispute arises in connection with the contract the same will be decided as per the provisions contained in the Kerala Co-operative Societies Act (21 of 1969). Only the courts of Ernakulam shall have jurisdiction over disputes related to this contract.

Sd/-

MANAGING DIRECTOR